



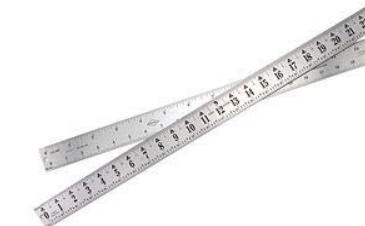
Loupes & Linen Testers
 -Plastic Based Loupes 10X-20X
 -Folding Loupes 10X-20X
 -Tri-Fold Linen Tester



Alcohol Testers
 Fast easy readings from these testers help take the guesswork out of alcohol control.
 Low Range - 12% to 1%
 Normal Range - 28% to 5%

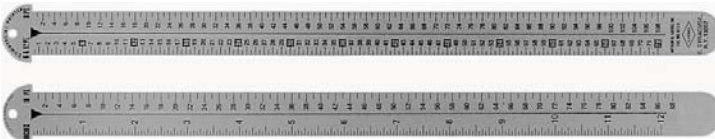


Conductivity Meters
 -Conductivity Meters
 -pH Meters
 -Combination Meters
 Myron L Brand



Gaebel Rulers
 Stainless steel construction.
 One or Two sided
 Inches, Points, Picas, Agates, Metric

#604	24"	Front has inches and gauge point slit. Back has picas & lines.
#605	12"	One-sided ruler. 1-1/4" width and .032" thickness
#605	18"	Top has Inches in 16ths and bottom is Picas
#605	24"	Flush start on these in stock sizes
#611	6"	Pica and Inches on front. Picas and Metric on back
#612	12"	Two-Sided
#612	18"	Front has 6 & 12 Point and Inches
#612	24"	Back has 6 & 12 Point and Agate
#612F	12"	Two-Sided
#612F	18"	Front has Inches and Agates
#612F	24"	Back has 6 & 12 Point (Picas) & Points
#612H	12"	Two-Sided
#612H	18"	Front has 6 & 12 Point on the left and Inches on the right
#612H	24"	Back has Metric and Points
#624	12"	Two-Sided. 1-1/4" width and .032" Thickness
#624	18"	Front = 32nds for 1st in. only and then 16ths the length
#624	24"	Bottom front = Picas. Back = like front & agates on bottom
#624M	12"	Two-Sided. Front is exactly the same as #624 series
#624M	18"	Back has two Metric scales running in opposite directions
#624M	24"	Top is millimeters. Bottom is half-millimeter



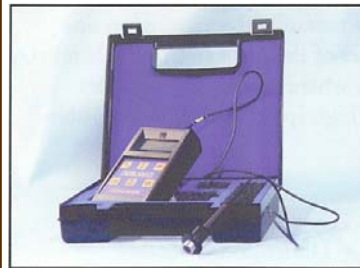
Thermometer
 3" Head x 6" Probe



Hand Held Packing Gauge
 Accurately measures the height of the surfaces of the two cylinders (in thousandths of an inch) and the total of these heights indicates if the degree of contact is proper. Dial indicator is calibrated in thousandths of an inch and is actuated by the vertical movement of the pressure lever



Magnetic Packing Gauge
 Best instrument available to measure actual thickness of packing under the blanket and plate on press. Although the packing & blanket thickness may have been measured prior to installation, after a few thousand impressions, packing can crush, changing plate pressure.



Digital Packing Gauge
 Digital Packing & Blanket Gauge
 For use only on blanket or aluminum and polyester plates applied to a ferrous substrate and use the magnetic properties of the substrate material to determine the material thickness. Easy to use.



Micrometer
 .0001" Graduations on Vernier
 Read digital counter to .001"
 Ratchet Stop & Lock Nut
 Fitted Case w/adjusting wrench
 Sizes 1-2" and larger available
 Baked enamel finish
 Carbide faces on anvil & spindle



#3 Zahn Cup
 Used to measure the viscosity of coatings.

MEASURING EQUIPMENT